



OPERATION MANUAL & PARTS LIST

MODELS:

DX-065PTL-V, DX-100PTL-V

DX-150PTL-H, DX-200PTL-H

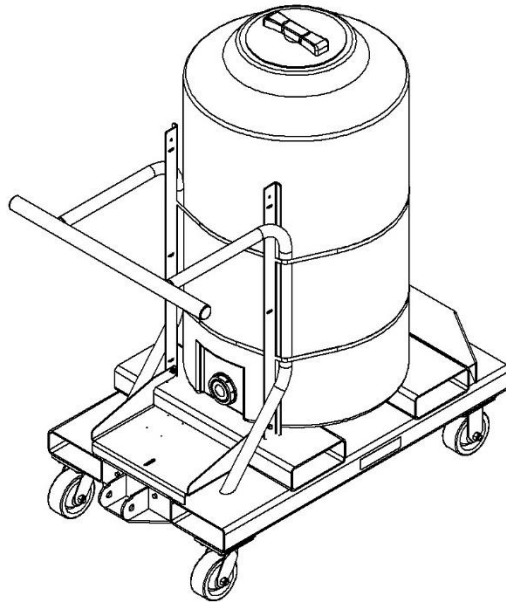


TABLE OF CONTENTS

| | |
|---|-------------------------------------|
| SECTION 1 – SAFETY INFORMATION | 3 |
| 1.1 – CAUTION | 3 |
| 1.2 – PRECAUTIONS | 4 |
| SECTION 2 – THE DISPENSER..... | 5 |
| 2.1 – UNIT IDENTIFICATION | 5 |
| 2.2 – DISPENSER FEATURES | 6 |
| SECTION 3 – SETUP | 7 |
| 3.1 – UNIT FLUSH | 7 |
| SECTION 4 – OPERATION | 8 |
| 4.1 – FILLING THE DISPENSER | 8 |
| 4.2 – DISCHARGING FLUID | 9 |
| SECTION 5 – MAINTENANCE | 10 |
| 5.1 – PUMP MAINTENANCE | Error! Bookmark not defined. |
| 5.2 – WEEKLY MAINTENANCE | 10 |
| SECTION 6 – TROUBLESHOOTING | 11 |
| SECTION 7 – REPAIR PARTS LIST | 12 |
| 7.1 – DISPENSER..... | 12 |
| 7.1.1 WHEELS - “PTL-V” PUSH TOW LIFT TRANSPORT 65 & 100 GAL..... | 12 |
| 7.1.2 WHEELS - “PTL-H” PUSH TOW LIFT TRANSPORT 150 & 200 GAL..... | 13 |
| 7.2 – TANK..... | 14 |
| 7.3 – PUMP ASSEMBLY..... | Error! Bookmark not defined. |
| SECTION 8 – WARRANTY..... | 15 |
| SECTION 9 – RECORD MODEL & SERIAL NUMBER | 16 |

SECTION 1 – SAFETY INFORMATION

1.1 – CAUTION

| | |
|--|---|
|     | <p style="text-align: center;">⚠ CAUTION</p> <p>THIS EQUIPMENT IS INTENDED FOR USE WITH STANDARD METALWORKING FLUIDS (WATER-BASE & CUTTING OILS) ONLY. IT SHOULD NOT BE USED WITH FLAMMABLE FLUIDS, (FUELS, PAINT, SOLVENTS, ETC.) CORROSIVE, TOXIC OR REACTIVE MATERIALS. DO NOT USE IN EXTRA-HIGH TEMPERATURE OR SPARK-HAZARD ENVIRONMENTS (OVENS WELDING AREAS, ETC.). CLEAN TANK THOROUGHLY ON A FREQUENT BASIS, ESPECIALLY WHEN PUMPING DIFFERENT TYPES OF COOLANTS AND SOLIDS OF DIFFERENT MATERIAL. WE RECOMMEND SEPARATE TANK UNITS FOR DIFFERENT SERVICES AND SEGREGATED HANDLING OF DIFFERENT COOLANTS.</p> |
| | <p style="text-align: center;">⚠ CUIDADO</p> <p>ESTE EQUIPO ES PARA USO CON FLUIDOS REGULARES DE CORTE (BASE AGUA Y ACEITES DE CORTS) EXCLUSIVAMENTE. NO SE DEBE USAR CON LÍQUIDOS INFLAMABLES, (COMBUSTIBLES, PINTURA, DISOLVENTES, ETC.). MATERIALES CORROSIVOS, TÓXICOS O REACTIVOS. NO UTILIZAR EN AMBIENTES DE TEMPERATURAS ALTAS O DONDE HAY RIESGO DE CHISPAS PELIGROSAS (HORNO, AREAS DE SOLDADURA, ECT.). LIMPIA A FONDO EL TANQUE DE MANERA FRECUENTE, ESPECIALMENTE CUANDO BOMBEE TIPOS DIFERENTES DE FLUIDO DE CORTE Y SÓLIDOS DE MATERIAL DISTINTO . RECOMENDAMOS UNIDADES SEPARADO DE DEPÓSITO DE LOS DIFERENTES SERVICIOS Y SEPARADO EL MANEJO DE DIFERENTES FLUIDO DE CORTE.</p> |

THIS EQUIPMENT IS INTENDED FOR USE WITH STANDARD MACHINE-TOOL COOLANT (WATER-BASE AND CUTTING OILS) ONLY. IT SHOULD NOT BE USED WITH FLAMMABLE FLUIDS (I.E. FUELS, PAINT, SOLVENTS, ETC.), CORROSIVE, TOXIC OR REACTIVE MATERIALS. DO NOT USE IN EXTRA-HIGH TEMPERATURE OR SPARK-HAZARD ENVIRONMENTS (I.E. OVENS WELDING AREAS, ETC.). CLEAN TANK THOROUGHLY ON A FREQUENT BASIS, ESPECIALLY WHEN PUMPING DIFFERENT TYPES OF COOLANT AND SOLIDS OF DIFFERENT MATERIAL. WE RECOMMEND SEPARATE TANK UNITS FOR DIFFERENT SERVICES AND SEGREGATED HANDLING OF DIFFERENT COOLANTS.

- NO FLAMMABLE FLUIDS/MATERIALS WITH A FLASH POINT UNDER 200°F.
- NO TOXIC MATERIALS.
- NO CORROSIVE MATERIALS WITH PH LESS THAN 5 OR GREATER THAN 12.
- NO REACTIVE MATERIALS.

1.2 – PRECAUTIONS

- READ THROUGH THE "OPERATIONS MANUAL" COMPLETELY BEFORE ATTEMPTING TO OPERATE THE MACHINE.

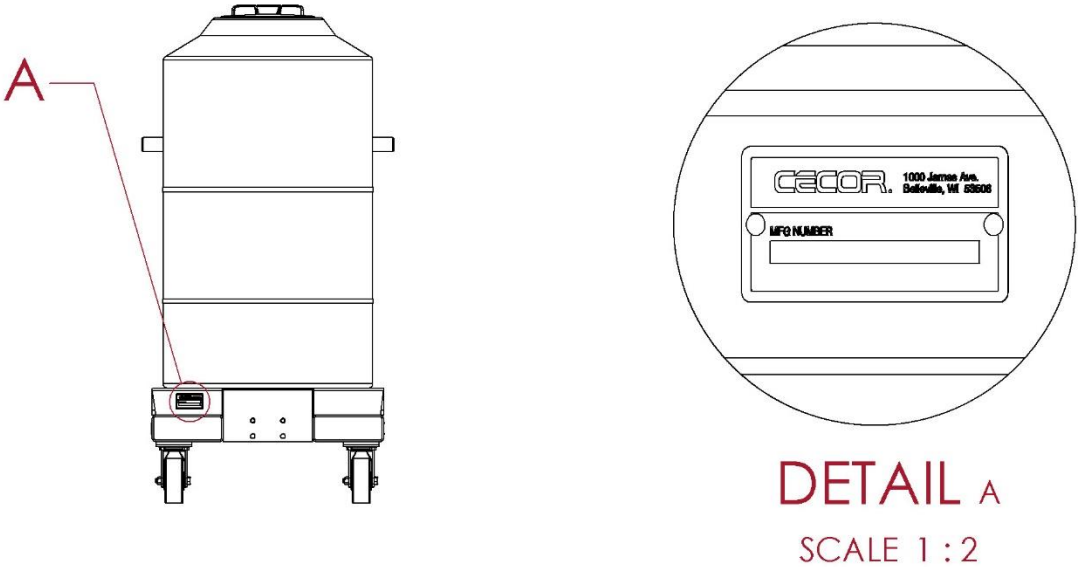
- BLOCK WHEELS OF THE MACHINE TO PREVENT UNINTENTIONAL MOVEMENT.

- WEAR SAFETY GOGGLES TO PROTECT EYES FROM SPLASHING LIQUIDS.

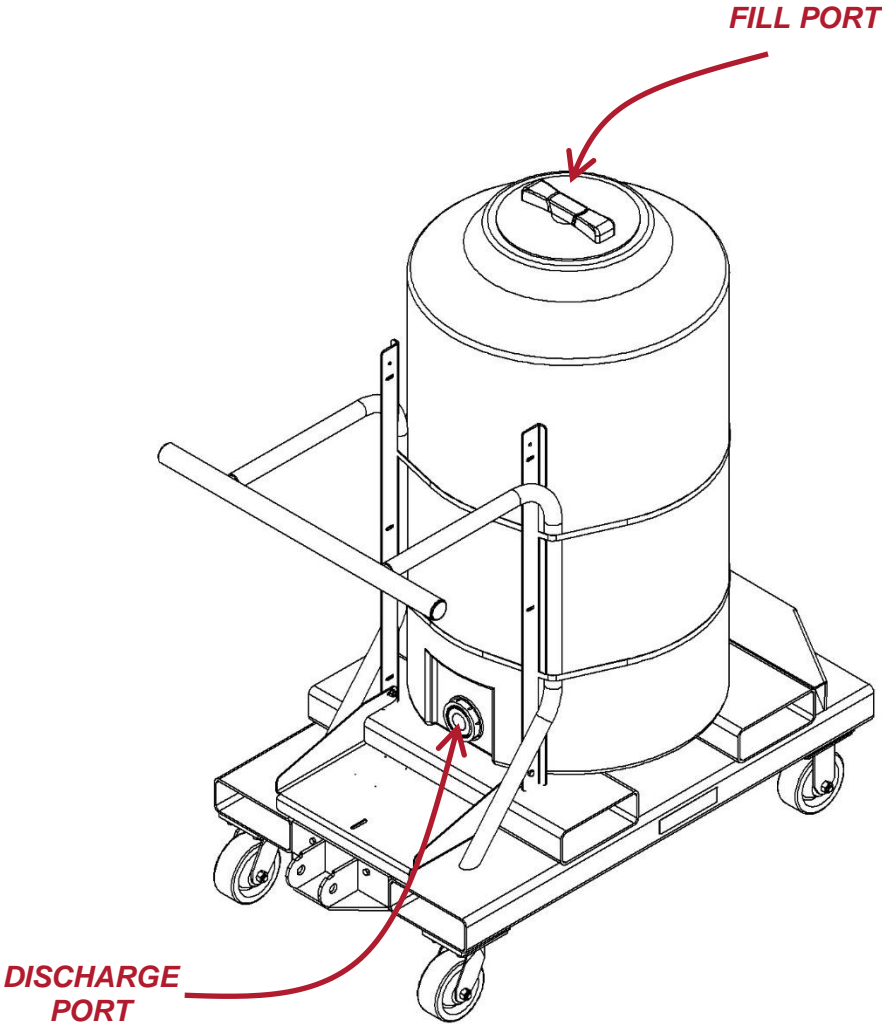
SECTION 2 – THE DISPENSER

2.1 – UNIT IDENTIFICATION

WHEN ORDERING PARTS OR ASKING QUESTIONS REGARDING YOUR DISPENSER, IT IS IMPORTANT TO HAVE THE MODEL NUMBER OF THE UNIT. THE MODEL NUMBER CAN BE FOUND ON THE DISPENSER'S NAMEPLATE LOCATED ON THE FRONT OF THE TRANSPORT.



2.2 – DISPENSER FEATURES



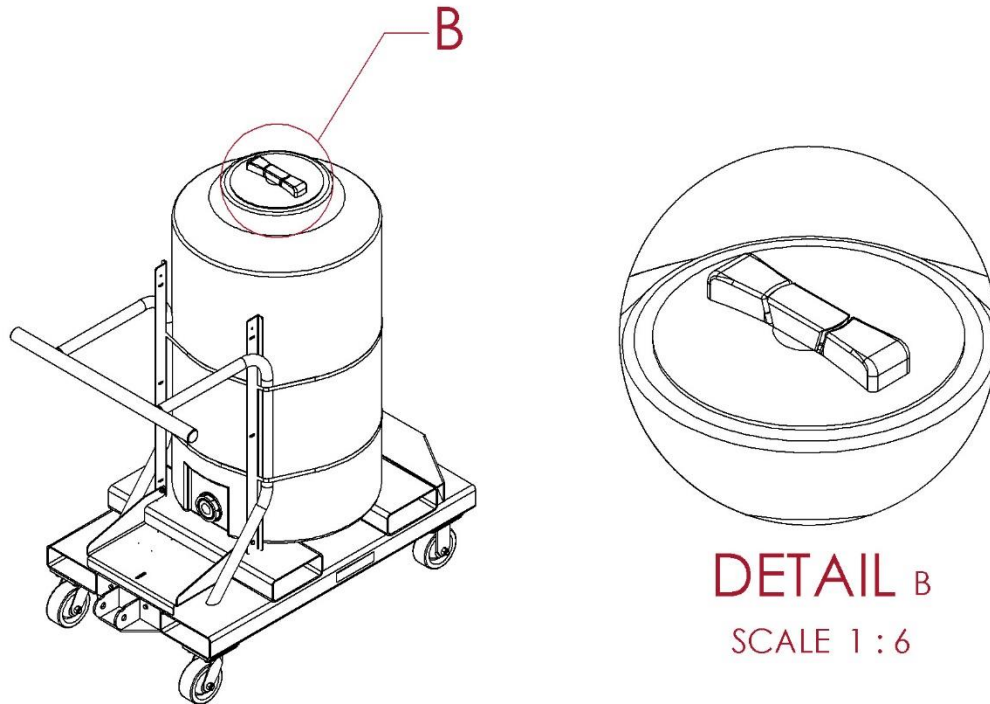
SECTION 3 – SETUP

3.1 – UNIT FLUSH

DURING THE QUALITY ASSURANCE PROCESS, THE UNIT IS TESTED WITH AN ANTIFREEZE MIX AND RESIDUAL LIQUID COULD BE IN THE TANK/LINES. THE UNIT WILL NEED TO BE FLUSHED PRIOR TO USE.

SECTION 4 – OPERATION

4.1 – FILLING THE DISPENSER



1. CLOSE THE VALVE ON THE END OF THE DISPENSING HOSE.
2. UNSCREW THE LID AND FILL THROUGH THE TOP PORT OF THE TANK.
3. LIQUID LEVEL CAN BE SEEN THROUGH THE TRANSLUCENT WALL OF THE TANK.
4. WHEN FULL, SCREW ON THE LID TO PREVENT SPLASHING OF LIQUID OUT OF THE TANK WHILE MOVING.

4.2 – DISCHARGING FLUID

1. PUT THE NOZZLE OF THE DISPENSING HOSE IN THE APPARATUS THAT WILL BE FILLED.
2. OPEN THE VAVLE ON THE DISPENSING HOSE AND THE FLUID WILL DISPENSE OUT.
3. WHEN DONE FILLING, CLOSE THE VALVE ON THE DISPENSING HOSE.

SECTION 5 – MAINTENANCE

TO GET THE HIGHEST PERFORMANCE FROM YOUR DISPENSER, IT IS IMPORTANT TO KEEP IT WELL MAINTAINED. BELOW IS A MAINTENANCE GUIDE THAT WILL KEEP YOUR DISPENSER IN TOP-NOTCH, DEPENDABLE CONDITION. ANY WORN OR DAMAGED PART SHOULD BE REPLACED IMMEDIATELY. CECOR STOCKS DISPENSER PARTS AND MOST CAN BE SHIPPED THE SAME OR THE NEXT DAY. CALL 1-800-356-9042 TO ORDER PARTS.

5.1 – WEEKLY MAINTENANCE

1. CHECK PLUMBING CONNECTIONS FOR ANY LEAKS TO AVOID SPILLS.

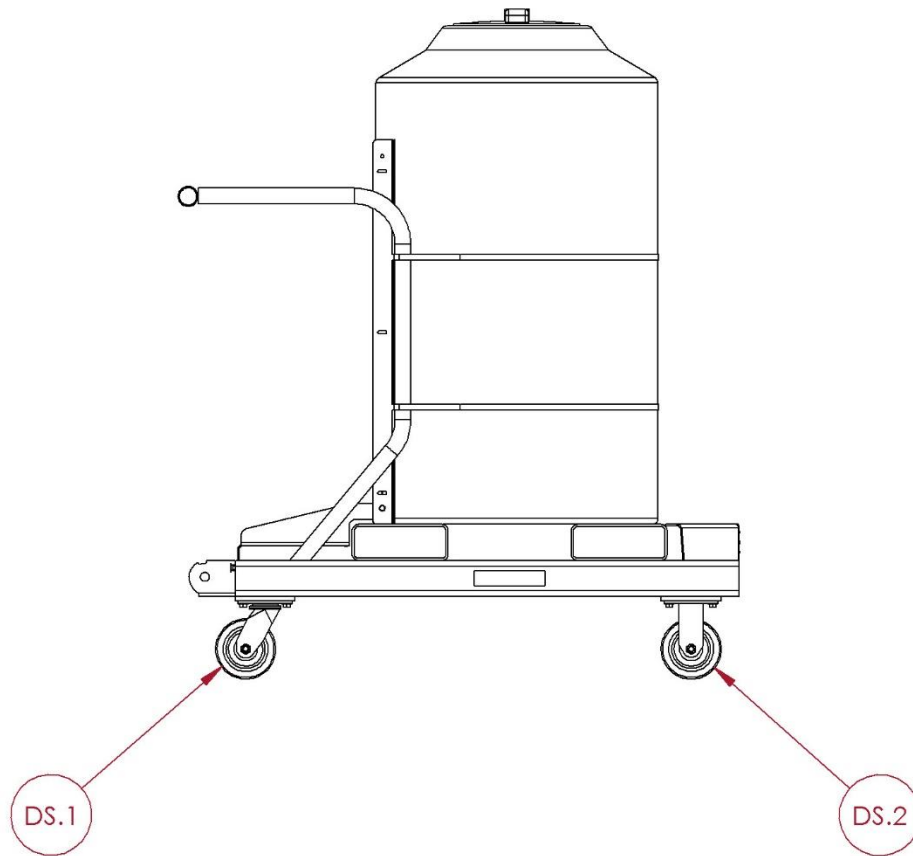
SECTION 6 – TROUBLESHOOTING

CALL 1-800-356-9042 FOR ASSISTANCE.

SECTION 7 – REPAIR PARTS LIST

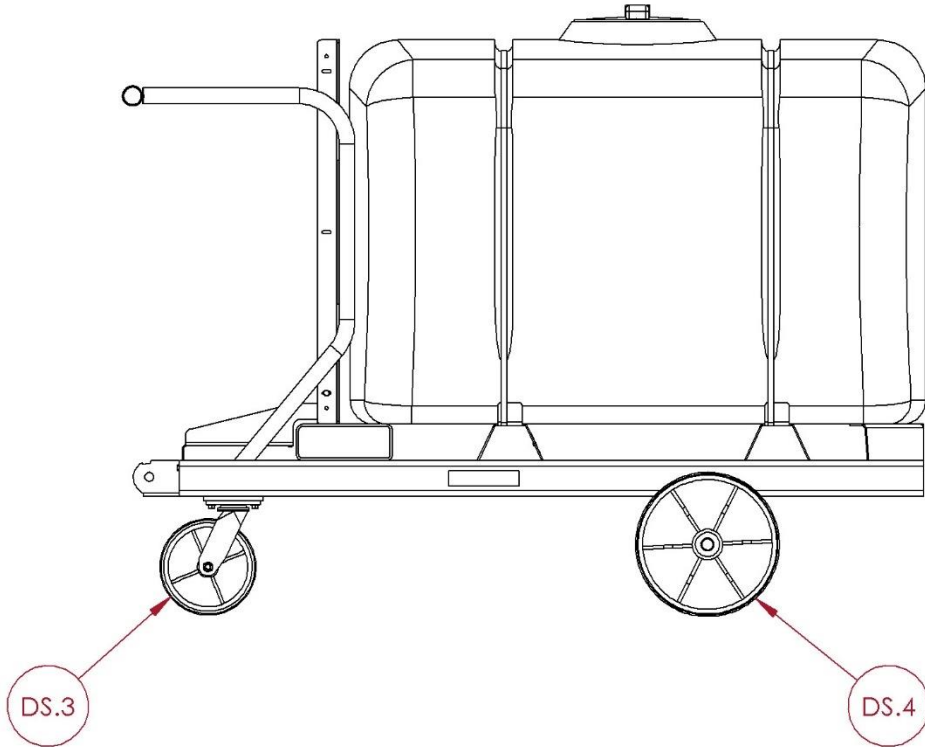
7.1 – DISPENSER

7.1.1 WHEELS - “PTL-V” PUSH TOW LIFT TRANSPORT 65 & 100 GAL



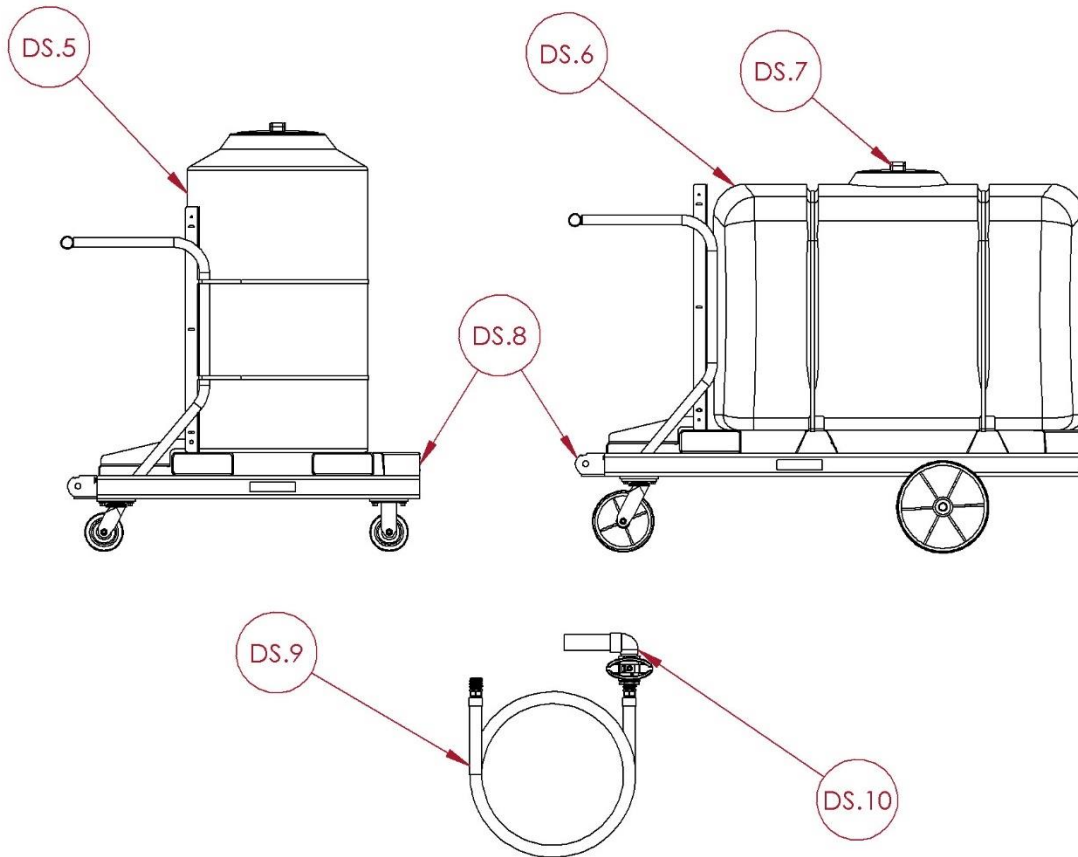
| REF | PART NUMBER | DESCRIPTION |
|------|---------------------|-----------------------------|
| DS.1 | PCST.SWIV.0501.0000 | CASTER - SWIVEL 5" PHENOLIC |
| DS.2 | PCST.RIGI.0501.0000 | CASTER - RIGID 5" PHENOLIC |

7.1.2 WHEELS - "PTL-H" PUSH TOW LIFT TRANSPORT 150 & 200 GAL



| REF | PART NUMBER | DESCRIPTION |
|------|---------------------|---|
| DS.3 | PCST.SWIV.0801.0000 | CASTER - SWIVEL 8" POLY |
| DS.4 | PCST.WHEL.1201.0KIT | WHEEL - 12" x 3"; POLY, WITH SPANNER & WASHER |

7.2 – TANK



| REF | PART NUMBER | DESCRIPTION |
|-------|---------------------|------------------------------------|
| DS.5 | PFAB.0000.0002.0650 | TANK VERT 65 GAL |
| DS.5 | PFAB.0000.0002.1000 | TANK VERT 100 GAL |
| DS.6 | PFAB.0000.0002.1500 | 150 GALLON FLAT BOTTOM |
| DS.6 | PFAB.0000.0002.2000 | 200 GALLON FLAT BOTTOM |
| DS.7 | PFAB.0000.0013.0000 | 8" LID WITH BLUE SNAP-IN VENT |
| DS.8 | CALL FOR INFO | DISPENSER TRANSPORT |
| DS.9 | ASC0.0028 | HOSE ASSEMBLY, DISPENSER, 1" x 16' |
| DS.10 | ASC0.0064 | NOZZLE - VALVE ASSEMBLY 1" |

SECTION 8 – WARRANTY

WARRANTY STATEMENT

PLEASE PRINT OUR WARRANTY AT [HTTPS://CECOR.NET/CECOR-WARRANTY/](https://cecor.net/cecor-warranty/)



SECTION 9 – RECORD MODEL & SERIAL NUMBER

WHEN YOU RECEIVE YOUR CECOR DISPENSER, RECORD THE MODEL NUMBER, SERIAL NUMBER AND DATE DELIVERED FOR YOUR RECORDS.

| |
|---|
| MODEL #: _____ |
| SERIAL #: _____ |
| DELIVERED: _____ / _____ / _____ |



CECOR®

