



OPERATION MANUAL & PARTS LIST

MODELS:

DA3-065PTL-V, DA3-100PTL-V

DA3-150PTL-H, DA3-200PTL-H

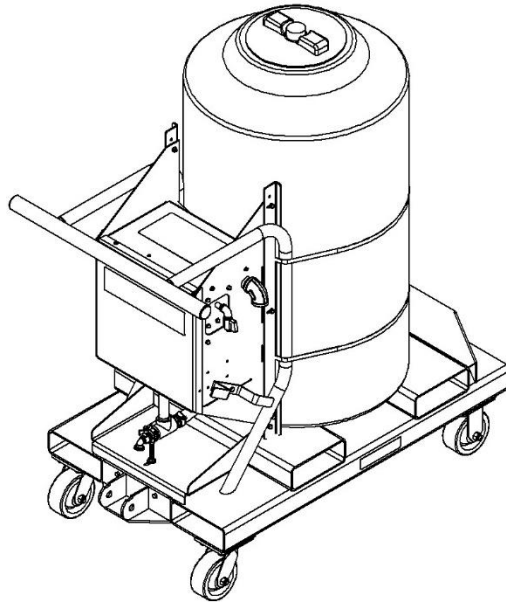


TABLE OF CONTENTS

SECTION 1 – SAFETY INFORMATION	3
1.1 – CAUTION	3
1.2 – PRECAUTIONS	4
SECTION 2 – THE DISPENSER.....	5
2.1 – UNIT IDENTIFICATION	5
2.2 – DISPENSER FEATURES	6
SECTION 3 – SETUP	7
3.1 – REGULATOR SETUP	7
3.2 – UNIT FLUSH	7
SECTION 4 – OPERATION	8
4.1 – FILLING THE DISPENSER	8
4.2 – DISCHARGING FLUID	9
SECTION 5 – MAINTENANCE	10
5.1 – PUMP MAINTENANCE	10
5.2 – WEEKLY MAINTENANCE	10
5.3 – MONTHLY MAINTENANCE	10
SECTION 6 – TROUBLESHOOTING	11
SECTION 7 – REPAIR PARTS LIST	12
7.1 – DISPENSER.....	12
7.1.1 WHEELS - “PTL-V” PUSH TOW LIFT TRANSPORT 65 & 100 GAL.....	12
7.1.2 WHEELS - “PTL-H” PUSH TOW LIFT TRANSPORT 150 & 200 GAL.....	13
7.2 – TANK.....	14
7.3 – PUMP ASSEMBLY.....	15
SECTION 8 – WARRANTY.....	16
SECTION 9 – RECORD MODEL & SERIAL NUMBER	17

SECTION 1 – SAFETY INFORMATION

1.1 – CAUTION

 FLAMMABLE INFLAMMABLE  TOXIC TÓXICO  CORROSIVE CORROSIVO  REACTIVE REACTIVIDAD	 CAUTION
	THIS EQUIPMENT IS INTENDED FOR USE WITH STANDARD METALWORKING FLUIDS (WATER-BASE & CUTTING OILS) ONLY. IT SHOULD NOT BE USED WITH FLAMMABLE FLUIDS, (FUELS, PAINT, SOLVENTS, ETC.) CORROSIVE, TOXIC OR REACTIVE MATERIALS. DO NOT USE IN EXTRA-HIGH TEMPERATURE OR SPARK-HAZARD ENVIRONMENTS (OVENS WELDING AREAS, ETC.). CLEAN TANK THOROUGHLY ON A FREQUENT BASIS, ESPECIALLY WHEN PUMPING DIFFERENT TYPES OF COOLANTS AND SOLIDS OF DIFFERENT MATERIAL. WE RECOMMEND SEPARATE TANK UNITS FOR DIFFERENT SERVICES AND SEGREGATED HANDLING OF DIFFERENT COOLANTS.
	 CUIDADO
	ESTE EQUIPO ES PARA USO CON FLUIDOS REGULARES DE CORTE (BASE AGUA Y ACEITES DE CORTS) EXCLUSIVAMENTE. NO SE DEBE USAR CON LÍQUIDOS INFLAMABLES, (COMBUSTIBLES, PINTURA, DISOLVENTES, ETC.). MATERIALES CORROSIVOS, TÓXICOS O REACTIVOS. NO UTILIZAR EN AMBIENTES DE TEMPERATURAS ALTAS O DONDE HAY RIESGO DE CHISPAS PELIGROSAS (HORNO, AREAS DE SOLDADURA, ECT.). LIMPIA A FONDO EL TANQUE DE MANERA FRECUENTE, ESPECIALMENTE CUANDO BOMBEE TIPOS DIFERENTES DE FLUIDO DE CORTE Y SÓLIDOS DE MATERIAL DISTINTO . RECOMENDAMOS UNIDADES SEPARADO DE DEPÓSITO DE LOS DIFERENTES SERVICIOS Y SEPARADO EL MANEJO DE DIFERENTES FLUIDO DE CORTE.

THIS EQUIPMENT IS INTENDED FOR USE WITH STANDARD MACHINE-TOOL COOLANT (WATER-BASE AND CUTTING OILS) ONLY. IT SHOULD NOT BE USED WITH FLAMMABLE FLUIDS (I.E. FUELS, PAINT, SOLVENTS, ETC.), CORROSIVE, TOXIC OR REACTIVE MATERIALS. DO NOT USE IN EXTRA-HIGH TEMPERATURE OR SPARK-HAZARD ENVIRONMENTS (I.E. OVENS WELDING AREAS, ETC.). CLEAN TANK THOROUGHLY ON A FREQUENT BASIS, ESPECIALLY WHEN PUMPING DIFFERENT TYPES OF COOLANT AND SOLIDS OF DIFFERENT MATERIAL. WE RECOMMEND SEPARATE TANK UNITS FOR DIFFERENT SERVICES AND SEGREGATED HANDLING OF DIFFERENT COOLANTS.

- NO FLAMMABLE FLUIDS/MATERIALS WITH A FLASH POINT UNDER 200°F.
- NO TOXIC MATERIALS.
- NO CORROSIVE MATERIALS WITH PH LESS THAN 5 OR GREATER THAN 12.
- NO REACTIVE MATERIALS.

1.2 – PRECAUTIONS

- READ THROUGH THE "OPERATIONS MANUAL" COMPLETELY BEFORE ATTEMPTING TO OPERATE THE MACHINE.

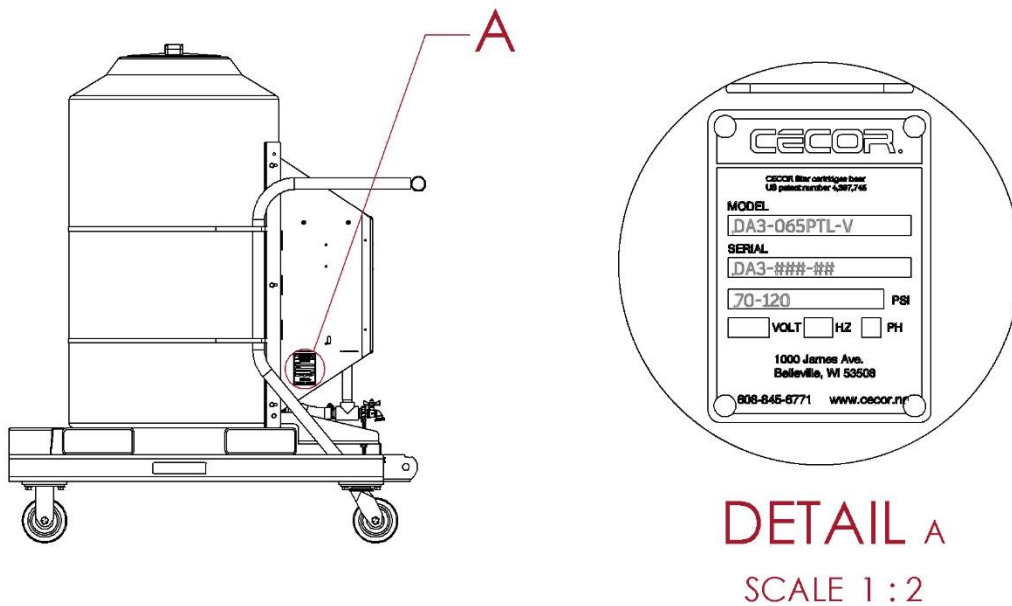
- BLOCK WHEELS OF THE MACHINE TO PREVENT UNINTENTIONAL MOVEMENT.

- WEAR SAFETY GOGGLES TO PROTECT EYES FROM SPLASHING LIQUIDS.

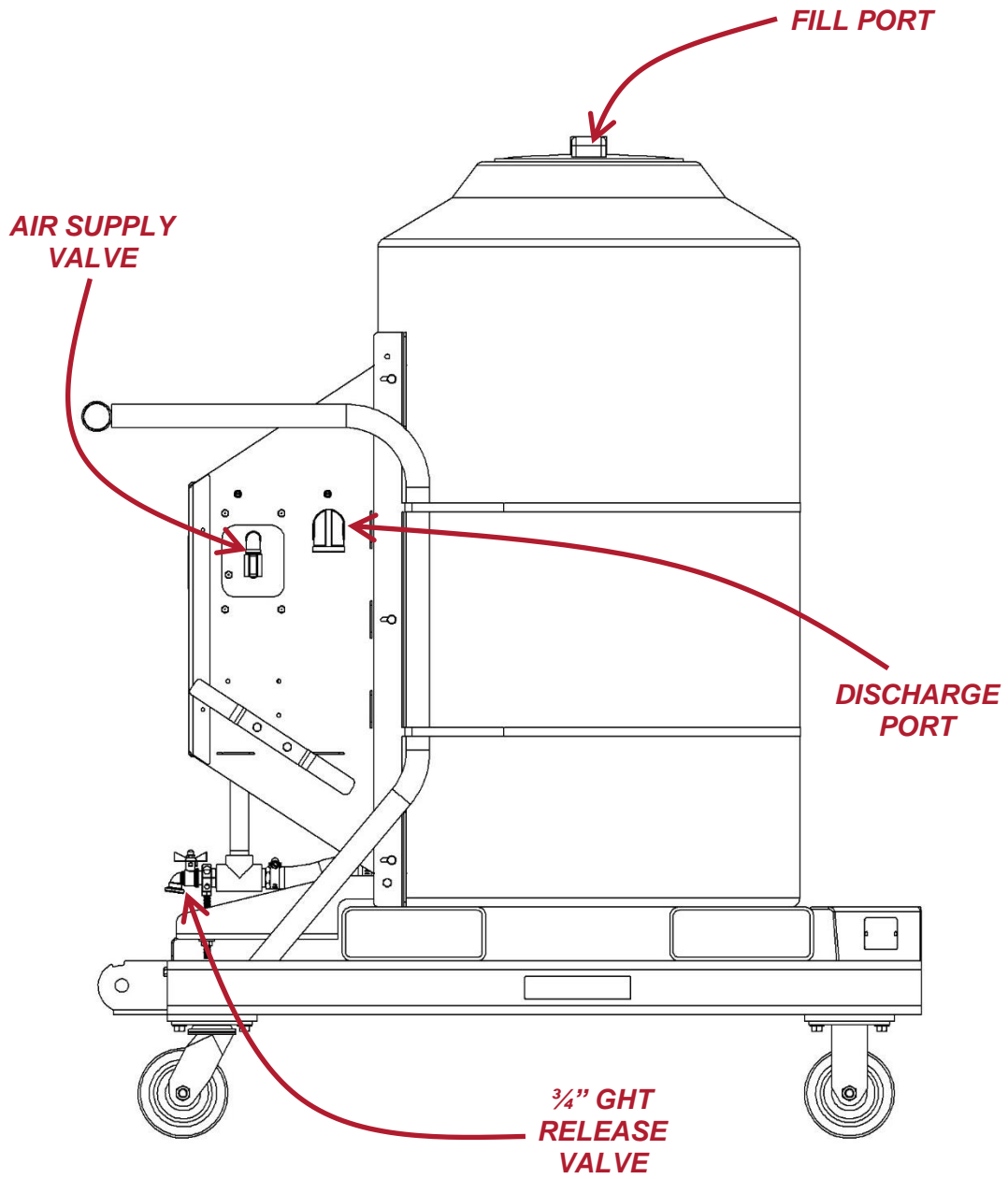
SECTION 2 – THE DISPENSER

2.1 – UNIT IDENTIFICATION

WHEN ORDERING PARTS OR ASKING QUESTIONS REGARDING YOUR DISPENSER, IT IS IMPORTANT TO HAVE THE MODEL AND SERIAL NUMBER OF THE UNIT. THE MODEL AND SERIAL NUMBER CAN BE FOUND ON THE DISPENSER'S NAMEPLATE LOCATED ON THE SIDE PANEL OF THE PUMP ASSEMBLY.



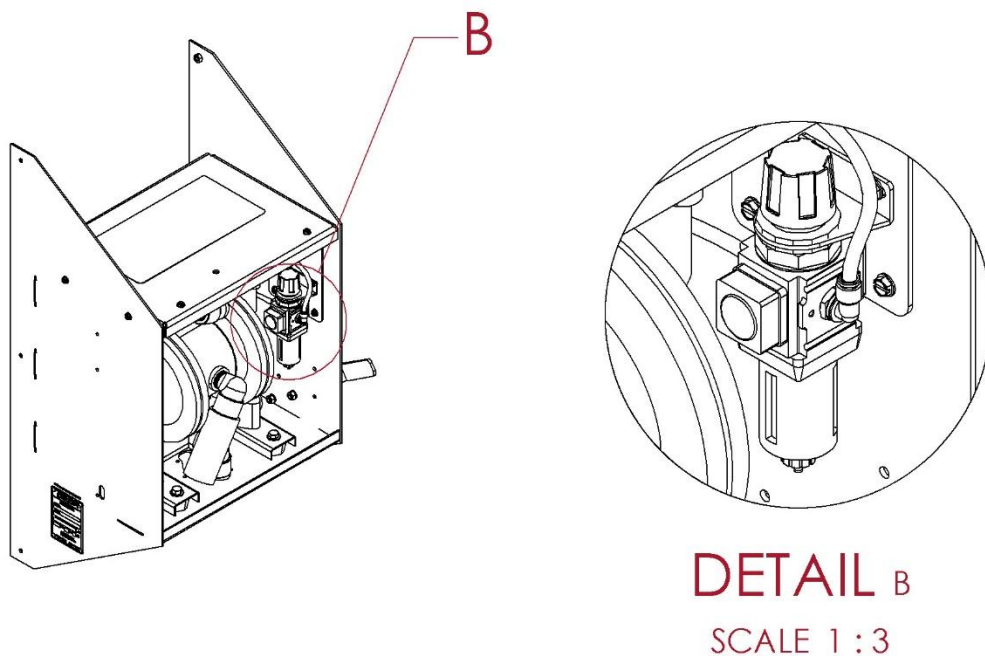
2.2 – DISPENSER FEATURES



SECTION 3 – SETUP

3.1 – REGULATOR SETUP

FINE TUNING OF THE AIR REGULATOR MAY NEED TO OCCUR FROM FACTORY. WITH THE TANK EMPTY, CONNECT THE AIR HOSE TO THE FACILITY SUPPLY LINE AND OPEN THE AIR SUPPLY VALVE. UNDER THE HOOD OF THE PUMP HOUSING IS WHERE THE AIR REGULATOR IS LOCATED.



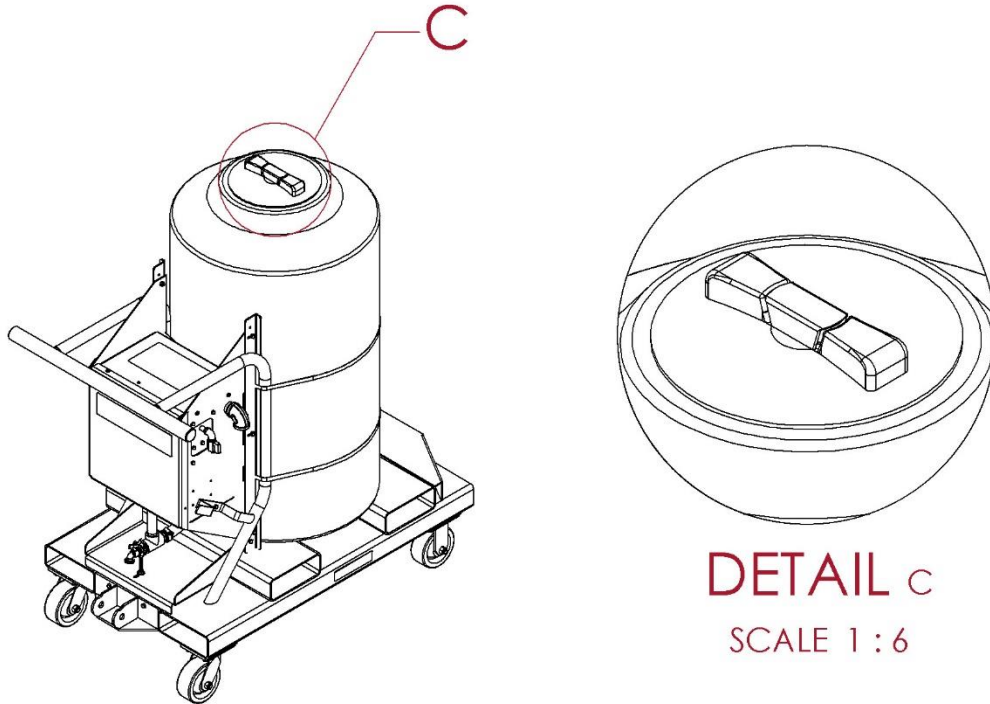
PULL UP ON THE DIAL AND TURN UNTIL THE DESIRED PSI SETTING IS FOUND. THE RECOMMENDED SETTING IS 80 PSI. **DO NOT** EXCEED 100 PSI. ONCE DESIRED SETTING IS FOUND, PUSH DOWN ON THE DIAL TO LOCK IT.

3.2 – UNIT FLUSH

DURING THE QUALITY ASSURANCE PROCESS, THE UNIT IS TESTED WITH AN ANTIFREEZE MIX AND RESIDUAL LIQUID COULD BE IN THE TANK/LINES. THE UNIT WILL NEED TO BE FLUSHED PRIOR TO USE.

SECTION 4 – OPERATION

4.1 – FILLING THE DISPENSER



1. CLOSE THE VALVE ON THE END OF THE DISPENSING HOSE.
2. UNSCREW THE LID AND FILL THROUGH THE TOP PORT OF THE TANK.
3. LIQUID LEVEL CAN BE SEEN THROUGH THE TRANSLUCENT WALL OF THE TANK.
4. WHEN FULL, SCREW ON THE LID TO PREVENT SPLASHING OF LIQUID OUT OF THE TANK WHILE MOVING.

4.2 – DISCHARGING FLUID

1. WITH THE VALVE ON THE DISPENSING HOSE CLOSED, PLUG THE AIR HOSE INTO THE FACILITY SUPPLY LINE.
2. OPEN THE AIR SUPPLY VALVE ON THE DISPENSER.
3. PUT THE NOZZLE OF THE DISPENSING HOSE IN THE APPARATUS THAT WILL BE FILLED.
4. OPEN THE VALVE ON THE DISPENSING HOSE, THE PUMP WILL ACTIVATE AND THE FLUID WILL DISPENSE OUT.
5. WHEN DONE FILLING, CLOSE THE VALVE ON THE DISPENSING HOSE AND THEN TURN THE AIR SUPPLY VALVE OFF.
6. DISCONNECT THE AIR HOSE FROM THE FACILITY SUPPLY LINE.

SECTION 5 – MAINTENANCE

TO GET THE HIGHEST PERFORMANCE FROM YOUR DISPENSER, IT IS IMPORTANT TO KEEP IT WELL MAINTAINED. BELOW IS A MAINTENANCE GUIDE THAT WILL KEEP YOUR DISPENSER IN TOP-NOTCH, DEPENDABLE CONDITION. ANY WORN OR DAMAGED PART SHOULD BE REPLACED IMMEDIATELY. CECOR STOCKS DISPENSER PARTS AND MOST CAN BE SHIPPED THE SAME OR THE NEXT DAY. CALL 1-800-356-9042 TO ORDER PARTS.

5.1 – PUMP MAINTENANCE

1. FOR MAINTENANCE OF THE PUMP, UTILIZE THE PUMP OPERATIONS MANUAL SUPPLIED BY THE PUMP MANUFACTURER.

5.2 – WEEKLY MAINTENANCE

2. CHECK PLUMBING CONNECTIONS FOR ANY LEAKS TO AVOID SPILLS.
3. CHECK THE AIR REGULATOR PSI FOR ANY CHANGES.

5.3 – MONTHLY MAINTENANCE

1. CHECK THE AIR REGULATOR FILTER. REPLACE IF DIRTY.
2. CHECK CASTER FOR DEBRIS. IF CASTERS DON'T SPIN 'FREELY', CLEAN & APPLY GREASE.

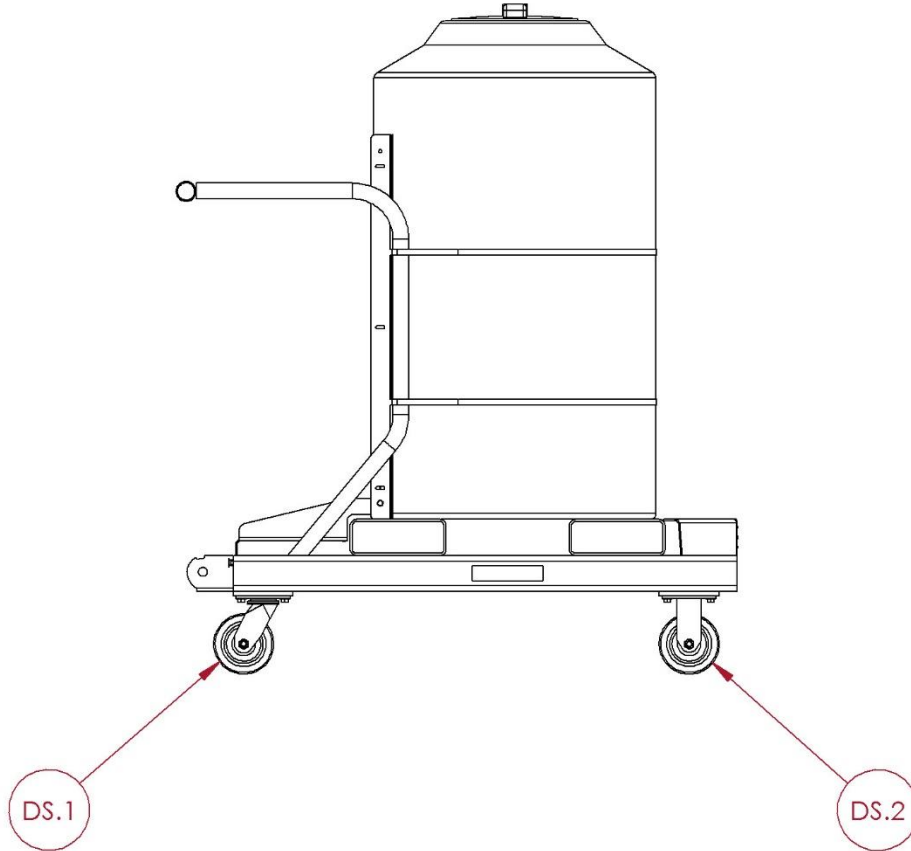
SECTION 6 – TROUBLESHOOTING

PROBLEM	POSSIBLE CAUSES	CORRECTIVE ACTION
Will not start	Air Supply	Make sure the unit is connected to an adequate air supply.
	Hose Restrictions	Check air lines for kinks or other restrictions.
	Blockage of Air Flow	Check for debris that may have come through the air line.
Will not discharge	Tank is Empty.	Fill tank.
	Valve on Dispensing Hose is Closed.	Open valve.
	Air Supply Valve is Closed.	Open valve.
Pumping Rate is Low	Air Regulator is Not Set Correctly	Adjust the air regulator to proper setting. DO NOT exceed 100 PSI.

SECTION 7 – REPAIR PARTS LIST

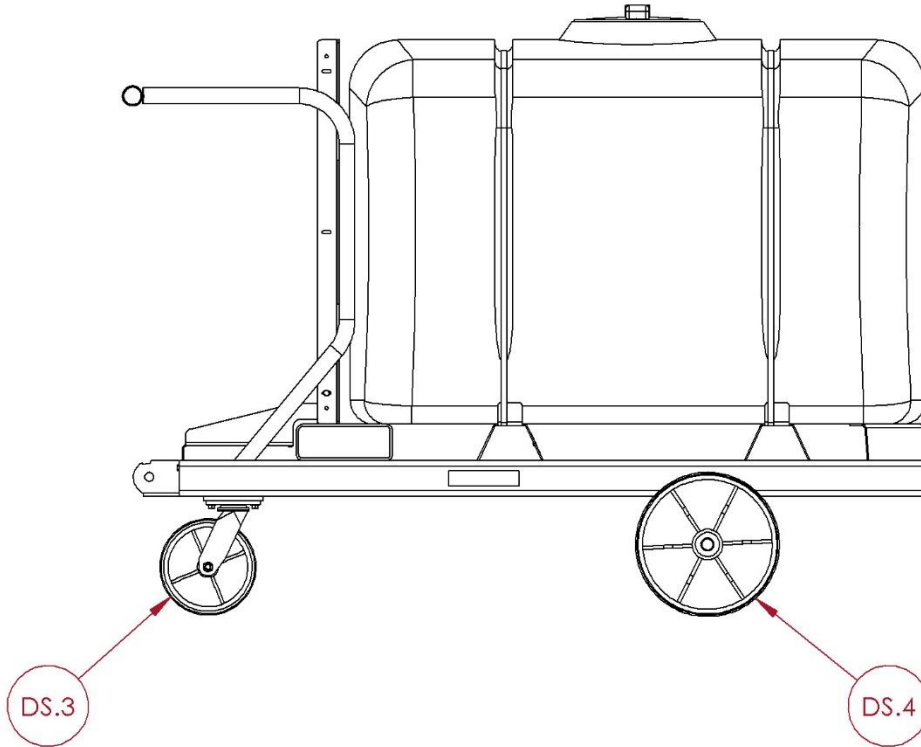
7.1 – DISPENSER

7.1.1 WHEELS - “PTL-V” PUSH TOW LIFT TRANSPORT 65 & 100 GAL



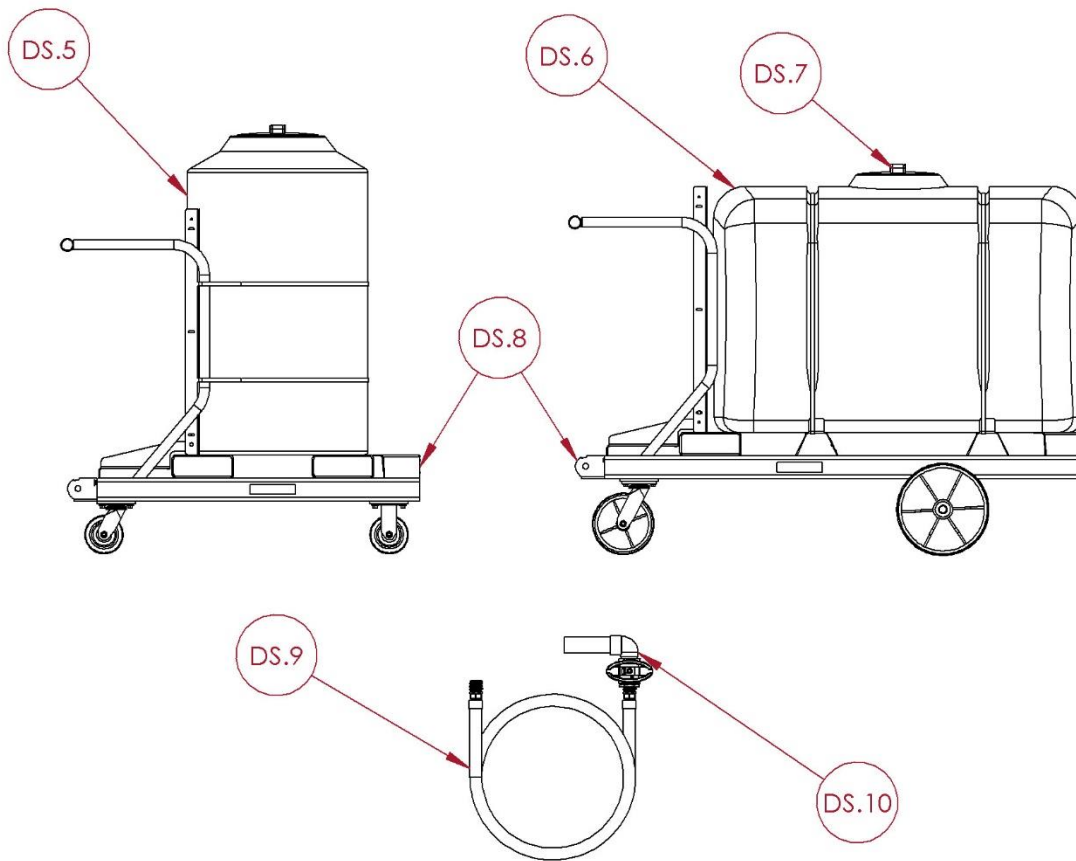
REF	PART NUMBER	DESCRIPTION
DS.1	PCST.SWIV.0501.0000	CASTER - SWIVEL 5" PHENOLIC
DS.2	PCST.RIGI.0501.0000	CASTER - RIGID 5" PHENOLIC

7.1.2 WHEELS - "PTL-H" PUSH TOW LIFT TRANSPORT 150 & 200 GAL



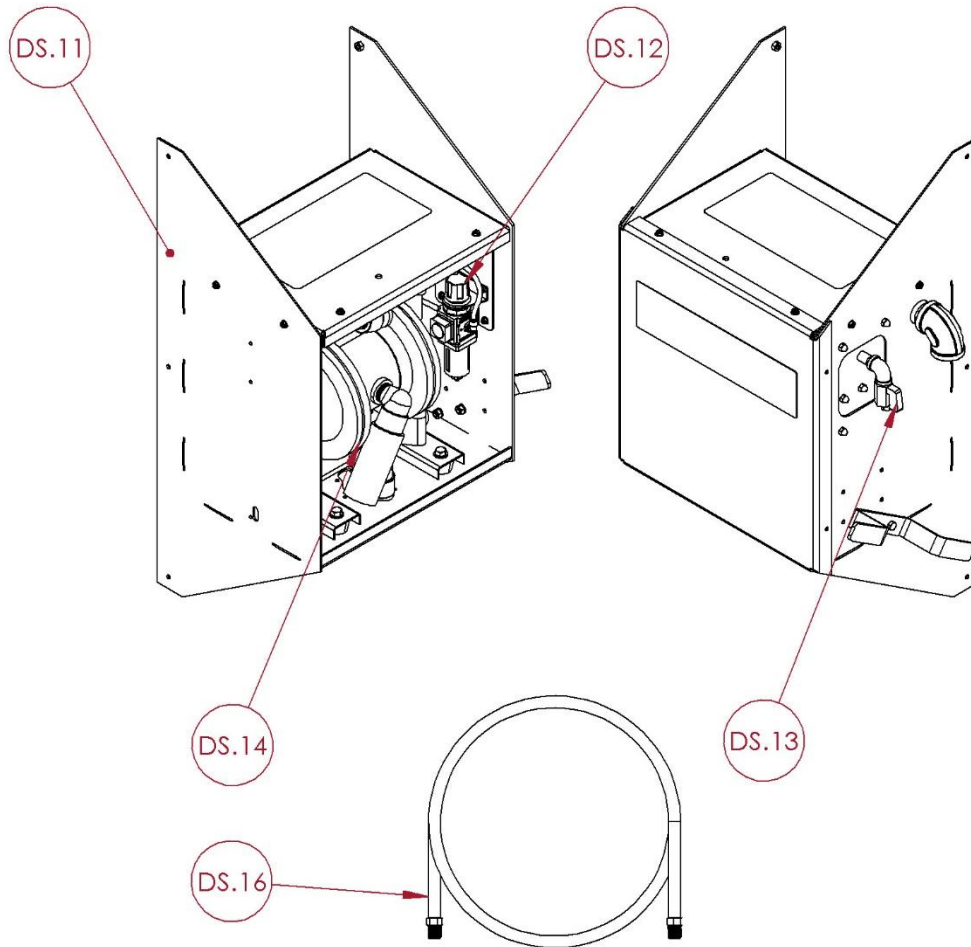
REF	PART NUMBER	DESCRIPTION
DS.3	PCST.SWIV.0801.0000	CASTER - SWIVEL 8" POLY
DS.4	PCST.WHEL.1201.0KIT	WHEEL - 12" x 3"; POLY, WITH SPANNER & WASHER

7.2 – TANK



REF	PART NUMBER	DESCRIPTION
DS.5	PFAB.0000.0002.0650	TANK VERT 65 GAL
DS.5	PFAB.0000.0002.1000	TANK VERT 100 GAL
DS.6	PFAB.0000.0002.1500	150 GALLON FLAT BOTTOM
DS.6	PFAB.0000.0002.2000	200 GALLON FLAT BOTTOM
DS.7	PFAB.0000.0013.0000	8" LID WITH BLUE SNAP-IN VENT
DS.8	CALL FOR INFO	DISPENSER TRANSPORT
DS.9	ASC0.0028	HOSE ASSEMBLY, DISPENSER, 1" x 16'
DS.10	ASC0.0064	NOZZLE - VALVE ASSEMBLY 1"

7.3 – PUMP ASSEMBLY



REF	PART NUMBER	DESCRIPTION
DS.11	DA3-V	DA3-V PUMP ASSEMBLY
DS.12	PPLM.0000.0002.0000	AIR FILTER/REGULATOR
DS.13	PVAL.BALL.0004.0000	VALVE - MINI
DS.14	PMOT.PUMP.0004.0000	PUMP - DIAPHRAGM
DS.15	PMOT.PUMP.0004.RKIT	PUMP - DIAPHRAGM REPAIR KIT (NOT SHOWN)
DS.16	PHOS.PVC0.0001.0000	AIR HOSE 1/4" x 20'

SECTION 8 – WARRANTY

WARRANTY STATEMENT

PLEASE PRINT OUR WARRANTY AT [HTTPS://CECOR.NET/CECOR-WARRANTY/](https://cecor.net/cecor-warranty/)



SECTION 9 – RECORD MODEL & SERIAL NUMBER

WHEN YOU RECEIVE YOUR CECOR DISPENSER, RECORD THE MODEL NUMBER, SERIAL NUMBER AND DATE DELIVERED FOR YOUR RECORDS.

<p>MODEL #: _____</p> <p>SERIAL #: _____</p> <p>DELIVERED: _____ / _____ / _____</p>



CECOR®

